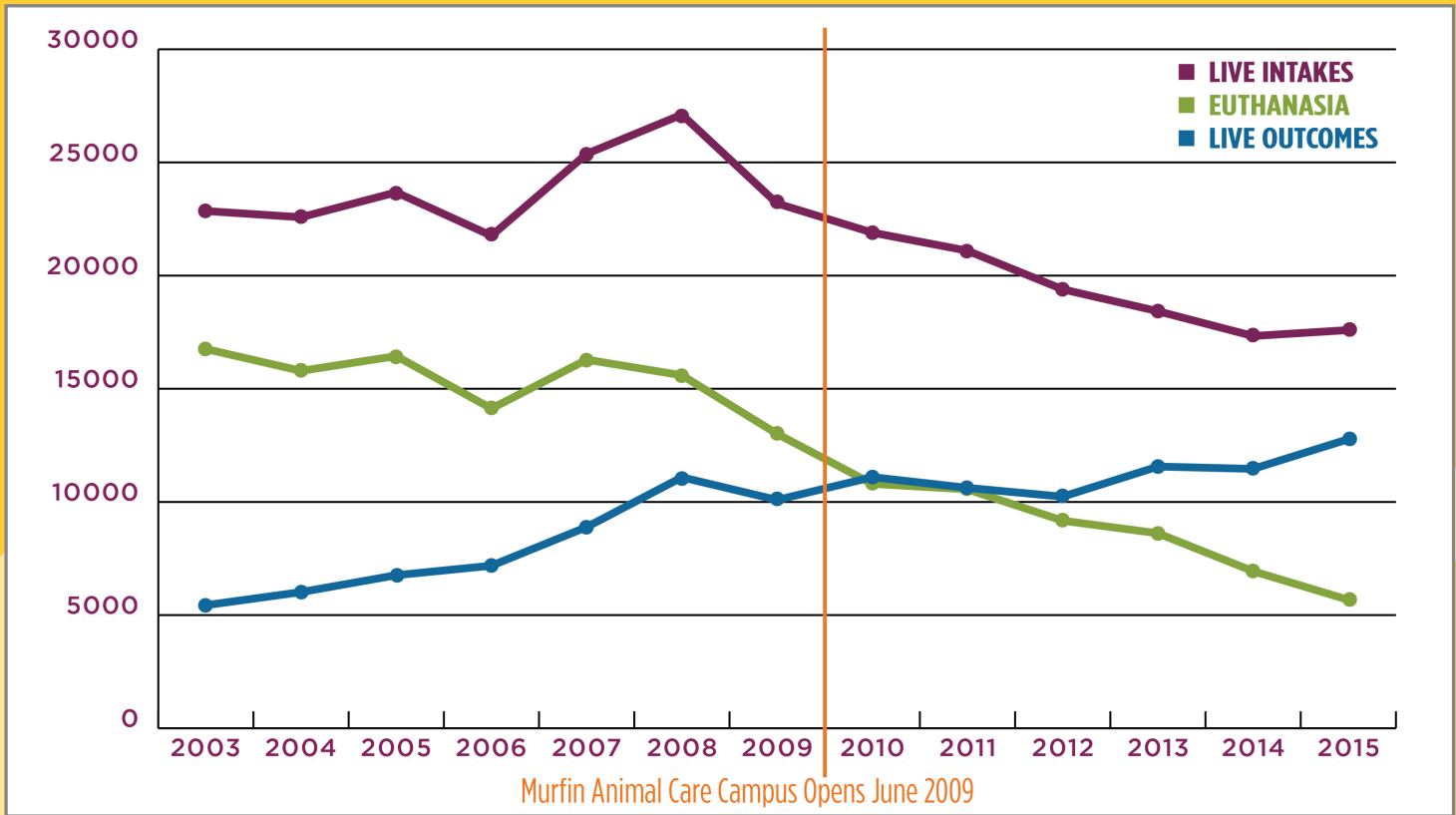


Murfin Animal Care Campus

Wichita Animal Services & Kansas Humane Society Combined Statistics



	Live Intakes	Live Outcomes	Euthanasia	Live Release Rate
2003	22853	5438	16756	24%
2004	22579	6016	15791	27%
2005	23680	6764	16444	29%
2006	21761	7183	14124	33%
2007	25381	8890	16286	35%
2008	27114	11089	15596	41%
2009	23189	10087	13009	43%
2010	21900	11096	10799	51%
2011	21099	10622	10557	50%
2012	19393	10232	9171	54%
2013	18427	11564	8615	63%
2014	17331	11461	6939	66%
2015	17593	12773	5675	73%



Opened in June 2009, the Murfin Animal Care Campus, located at K96 and Hillside, features facilities for the Kansas Humane Society (a non-profit organization funded by private donations) and the City of Wichita (a municipal entity funded by tax dollars). Located side by side, this collaborative partnership improves both organizations work and helps more pets, pet owners, adopters and the community.